

# SC-RPICK

## PICK AND CARRY

Handling and riding with loads  
without the need for footing

up to  
**995 Kg**

### Danfoss Hydraulics

Max. Hydraulic flow rate 20 l/min  
Max. Hydraulic pressure 180 bar  
Proportional distributor  
Piston hydraulic generator  
Combination of functions



### Kubota engine

18,5 kW  
24,8 hp



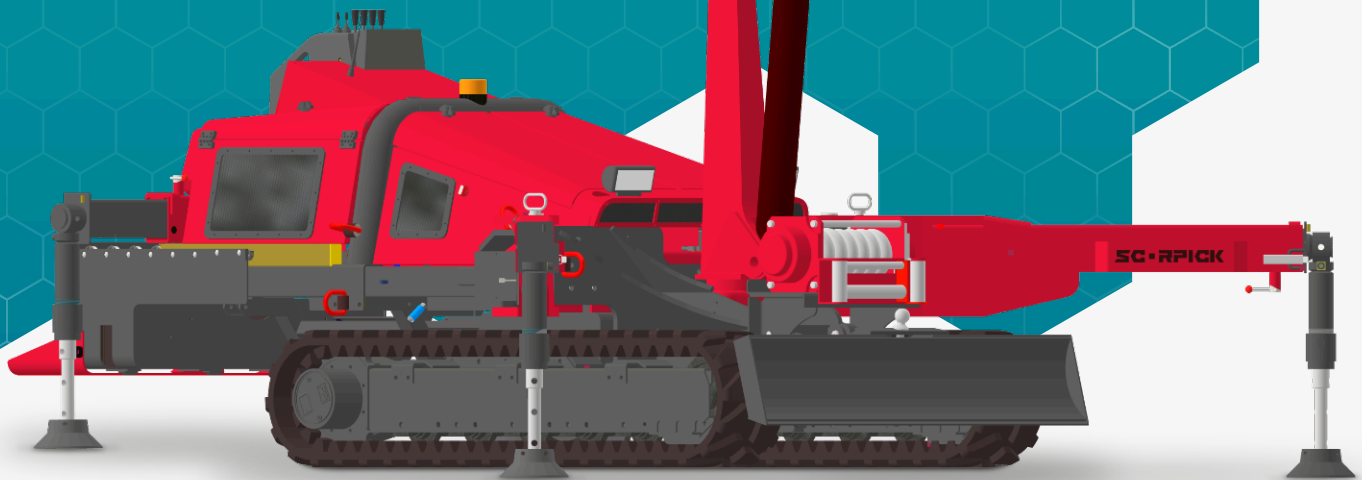
### Main arm

Max. height 8,25 m  
Max. weight 2 000 Kg  
Radius 190 degrees



### Remote control

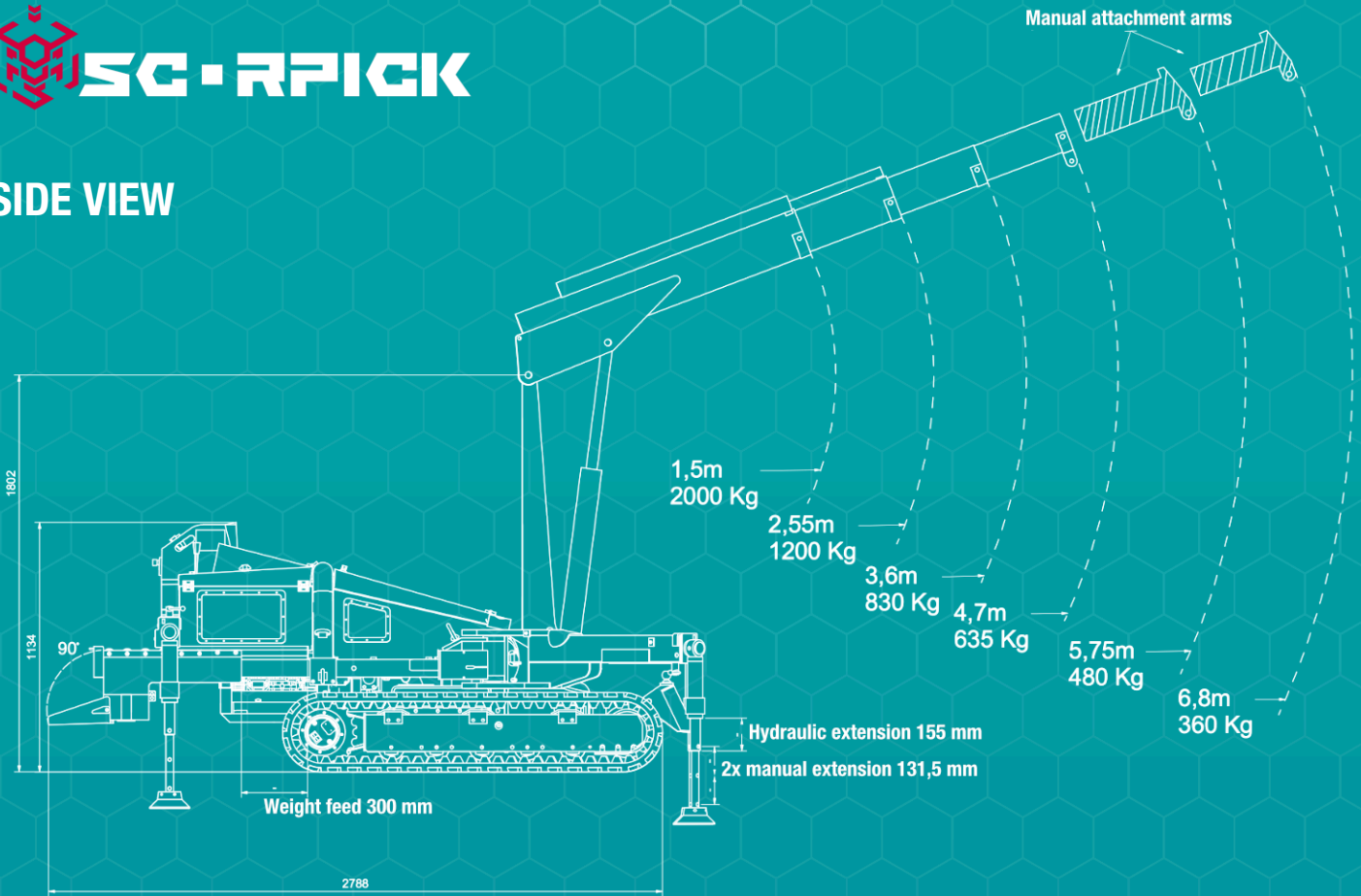
Multifunctional  
Plowshare control  
Track control  
Crane control



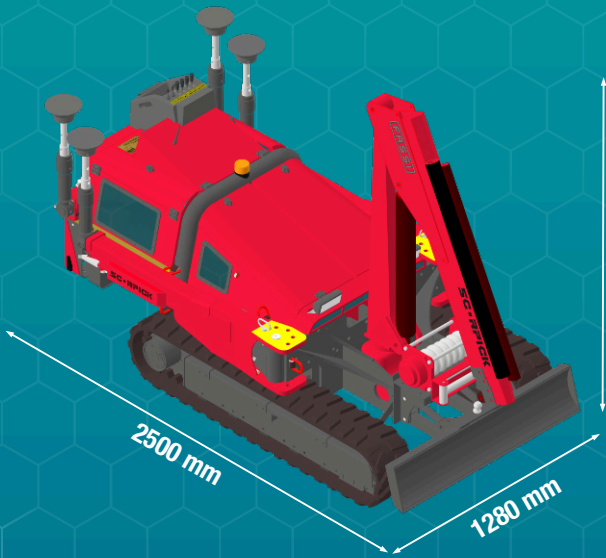
- Track pressure on the ground 0,36 Kg/cm<sup>2</sup>
- Variable adjustable feet
- Traction device for 3,5 t
- 4,5 t hydraulic winch
- Plowshare

- Electrically operated counterweight
- Warranty 12 months (24 months for HNJ construction)
- Machine weight 2050 Kg (depending on equipment)
- 26 years of experience
- Czech manufacture

## SIDE VIEW



## DIMENSIONS



## TOP VIEW

